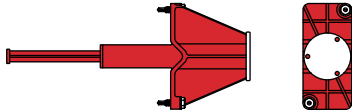




# KCM-MD Short Plate $\frac{3}{8}'' + \frac{1}{2}'' + \frac{5}{8}''$

2222257-01.2025

**45** KWIK CAST  
KCM-MD S  $\frac{3}{8}'' + \frac{1}{2}'' + \frac{5}{8}''$   
RED-RED  
#2221701



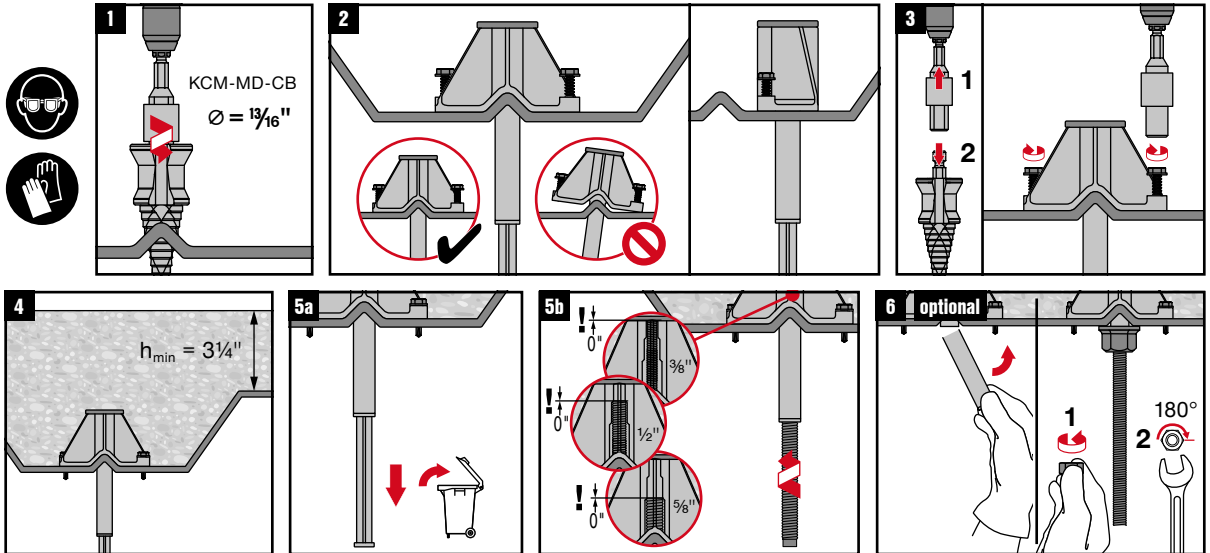
Info | Shop



qr.hilti.com/2221701

Batch Tracking  
Information

Made in Taiwan  
Hilti = trademark of Hilti Corp., Schaun, LI



UL maximum pipe size allowed for 3/8-inch rod is 8 NPS in the lower flute.