

CE
21
Hilti AG FL-9494 Schaan
Hilti-DX-DoP-008
ETA-20/1042
EAD 333037-00-0602
0672
Threaded studs for connection
of materials to structural steel

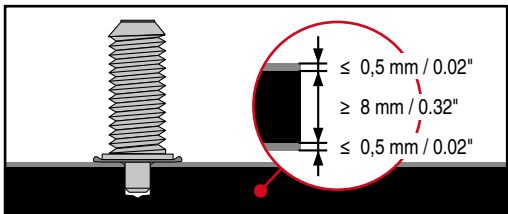


BUREAU
VERITAS

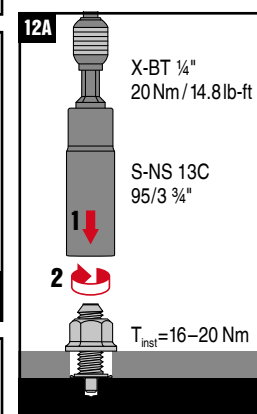
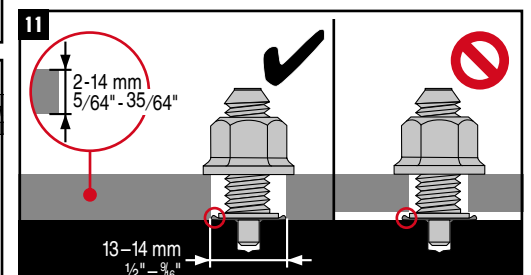
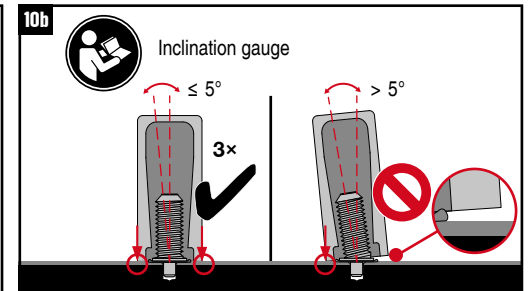
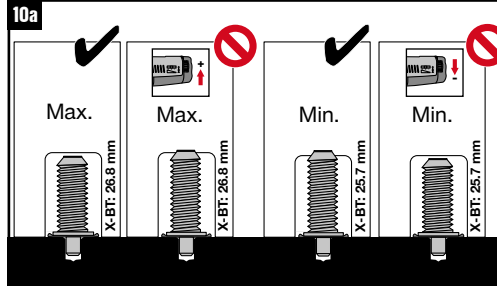
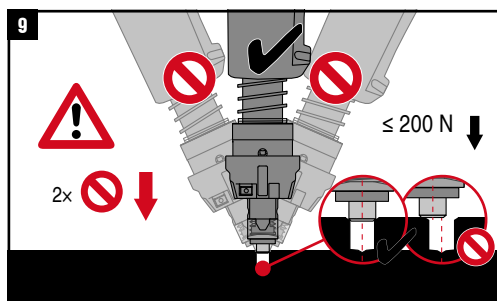
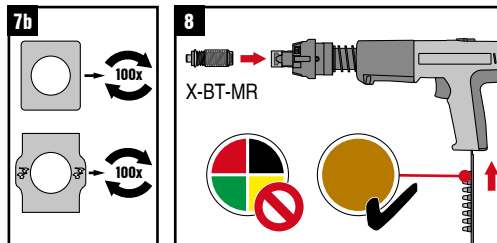
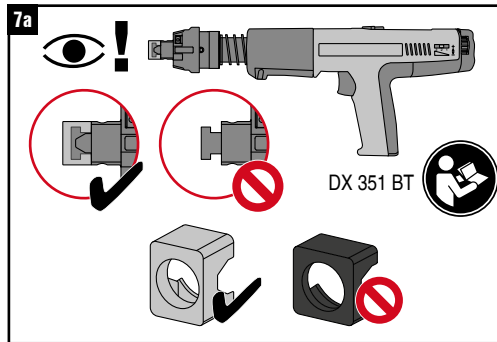
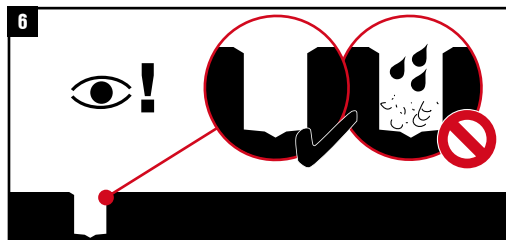
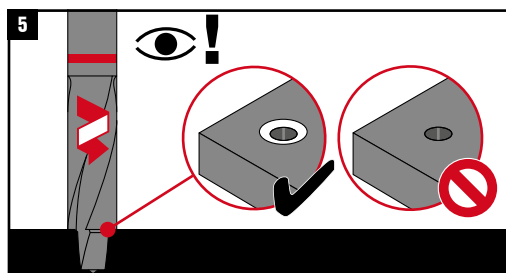
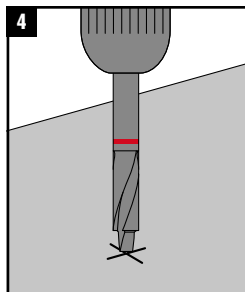
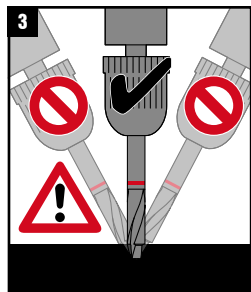
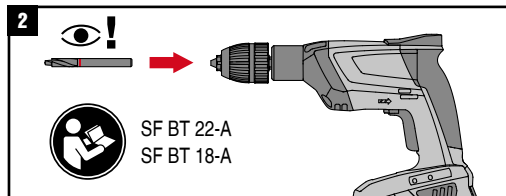
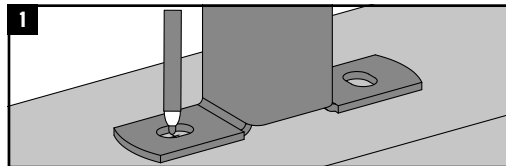
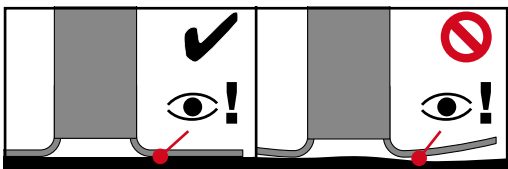
Lloyd's Register
TYPE APPROVED



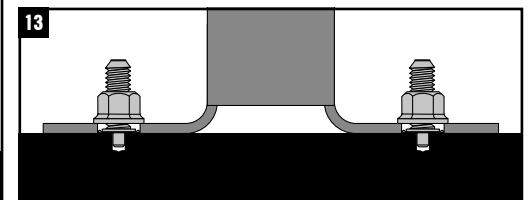
Hilti Corrosion handbook / DFTM
A4 316 Equivalent Corrosion Resistance



Use with					
X-BT-MR M8/14 SN 8	SF BT 22-A SF BT 18-A	DX 351-BT	X-BT 1/4" 20Nm / 14.8 ft lb	S-NS 13 C 95/3 3/4"	X-IG BT M8



SF 6H-A22	1	5
SF 6H-A22	1	5
SF 10W-A22	4	11
SF 8M-A22	4	11
SFC 14-A	2	11
SFC 22-A	2	11

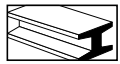
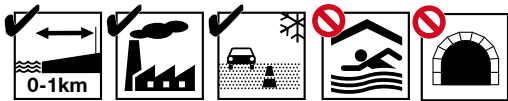


CE
21
Hilti AG FL-9494 Schaan
Hilti-DX-DoP-008
ETA-20/1042
EAD 333037-00-0602
0672
Threaded studs for connection
of materials to structural steel

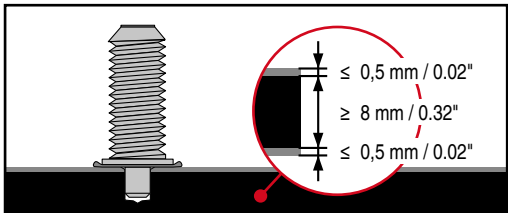


BUREAU
VERITAS

Lloyd's Register
TYPE
APPROVED



A4
316 Equivalent
Corrosion
Resistance



Use with					
X-BT-MR M8/14 SN 8	SF BT 22-A SF BT 18-A	BX 3-BT	X-BT 1/4" 20Nm/ 14.8 ft lb	S-NS 13 C 95/3 3/4"	X-IG BT M8

