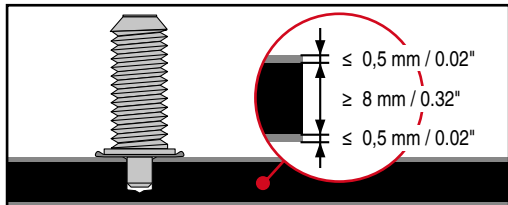
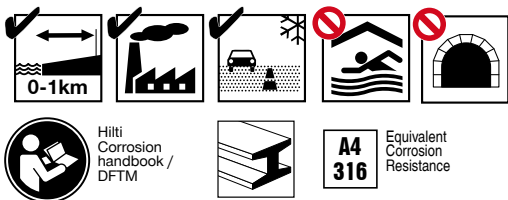
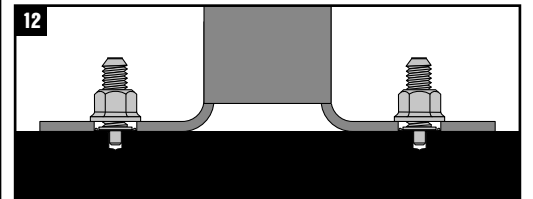
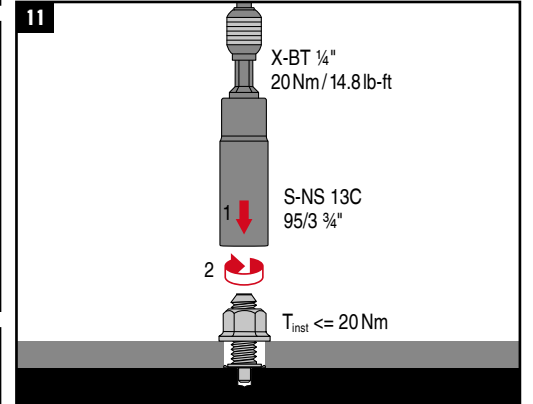
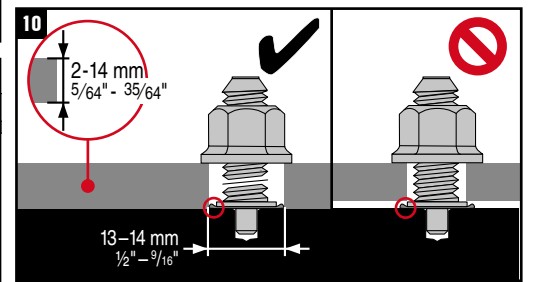
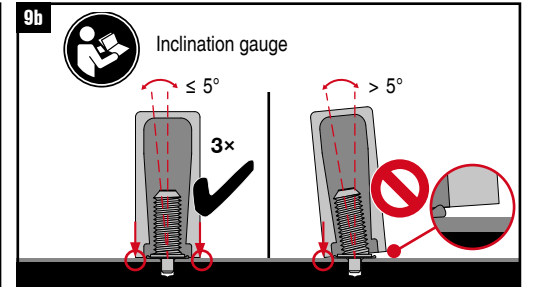
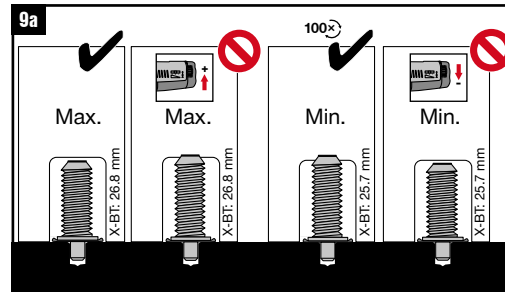
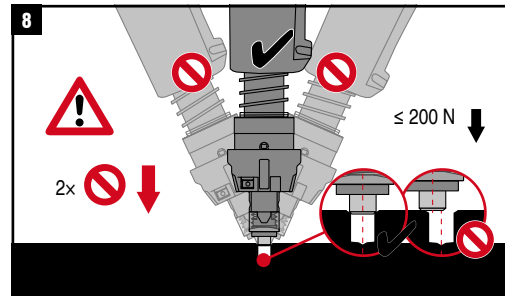
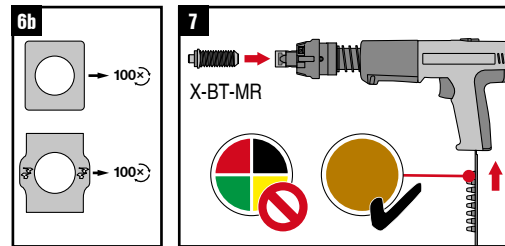
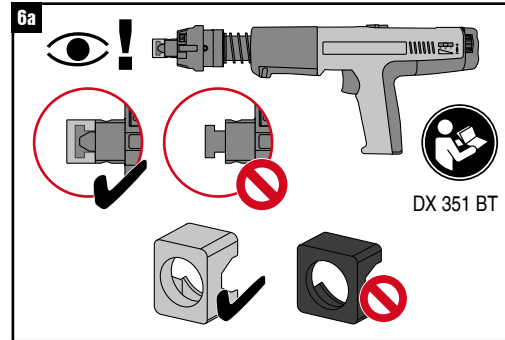
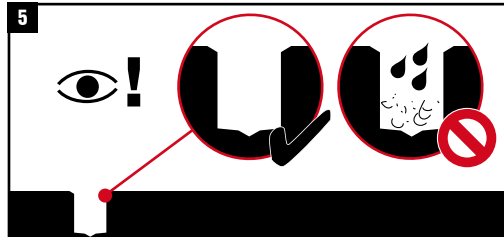
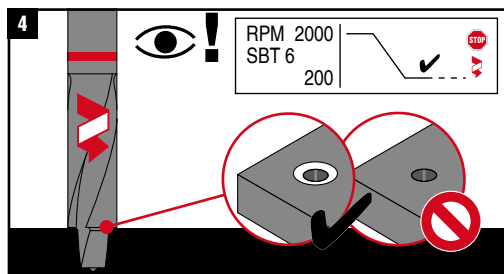
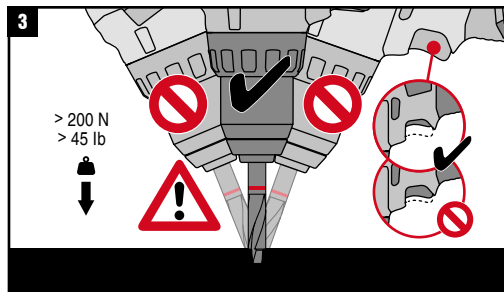
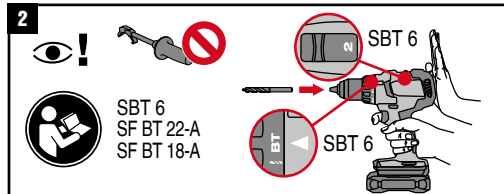
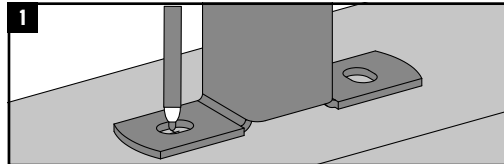
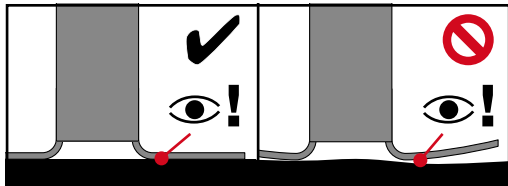


2203796-12.2024

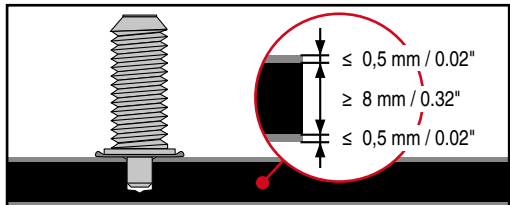
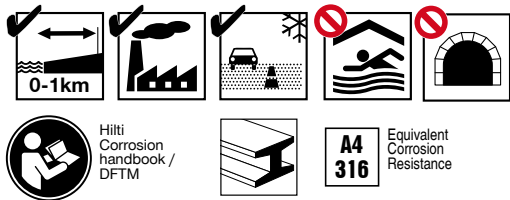
CE
21
Hilti AG LI-9494 Schaan
Hilti-DX-DoP-008
ETA-20/1042
EAD 333037-00-0602
0672
0672-CPR-0934
Threaded studs for connection of materials to structural steel



Use with					
X-BT-MR M10/15 SN 8	SBT 6 SF BT 22-A SF BT 18-A	DX 351-BT	X-BT 1/4" 20Nm/ 14,8 ft lb	S-NS 15 C 95/3 1/4" S-NS 9/16" C 95/3 3/4"	X-IG BT M10 W10



CE
21
Hilti AG LI-9494 Schaan
Hilti-DX-DoP-008
ETA-20/1042
EAD 333037-00-0602
0672
0672-CPR-0934
Threaded studs for connection
of materials to structural steel



		Use with				
X-BT-MR M10/15 SN 8	✓	SBT 6 SF BT 22-A SF BT 18-A	BX 3-BT	X-BT 1/4" 20Nm/ 14,8 ft lb	S-NS 15 C 95/3 3/4"	X-IG BT M10
X-BT-MR W10/15 SN 8					S-NS 9/16" C 95/3 3/4"	X-IG BT W10

