



APPLICATION:
Metal Pipes with Continuous Sustained Insulation

ID:
IS:SP-RF-M-04

INFORMATION:
 - Not to scale
 - All units are in millimetres
 - Tested according EN 1366-3
 - [Approval ETA-10/0406](#)

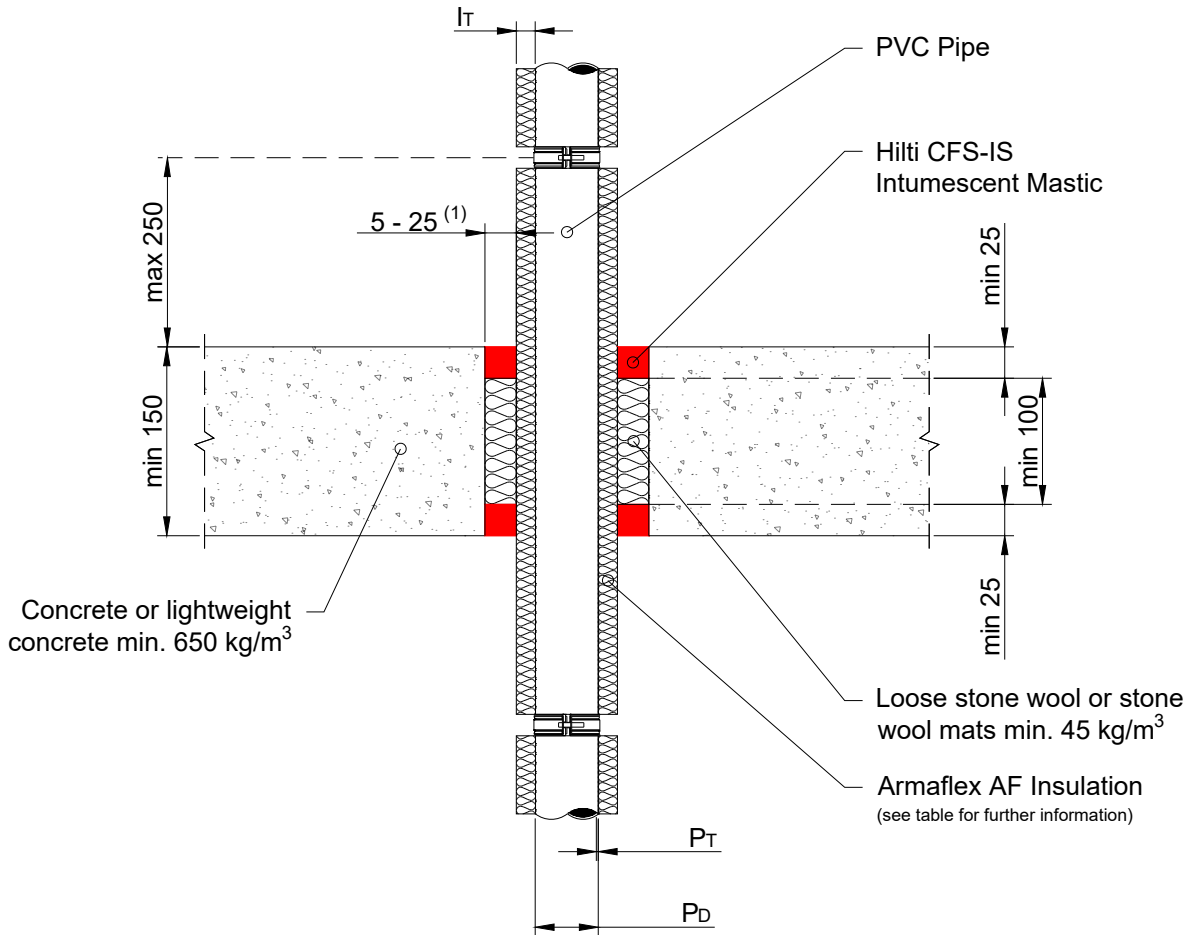
CFS-IS Intumescent Sealant

REV:
01

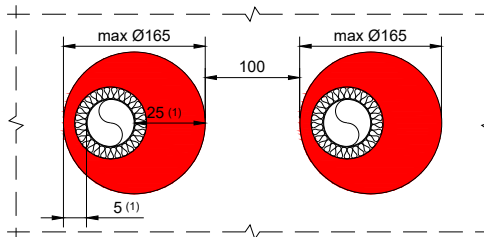
DATE:
10/2024

Fire Rating up to EI 120

Page 2/2



(1) min. 5mm annulus provided
 min. 25mm on the opposite side



| Pipe | | Insulation | Classification |
|--|----------------|------------|----------------|
| $P_D \varnothing$ | P_T | I_T | |
| Copper/Steel Pipes (Continuously Sustained) with Armaflex AF | | | |
| $\geq 10-42$ | 1.0 / 1.2-14.2 | 7.5-20.5 | EI 120 C/U |
| $\geq 42-89$ | 1.2 / 2.0-14.2 | 14.5-22.5 | EI 60 C/U |

Max opening size 150mm x 150mm or circular openings of equivalent area ($\varnothing 165$ mm).
 Min. 100mm distance to other firestopping penetrations and timber studs.
 Min. 200mm to other penetrations (e.g., doors, windows etc.)

1. The application limits on this detail are for guidance purposes only. For more detailed information based on the full range of available test results please contact the Hilti Technical Advisory Service.
 2. The product and application has been assessed as a minimum to the BS 476 standard. It may have additional European and worldwide testing. Please contact Hilti for further information.
 3. All installations should be carried out in accordance with Hilti's installation instructions and by competent & experienced installers using Hilti branded products.
 4. All services are to be correctly and adequately supported to prevent collapse and distortion.