



APPLICATION:

Cables within Rigid Walls

ID:

IS:SP-RW-E-01

INFORMATION:

- Not to scale
- All units are in millimetres
- Tested according EN 1366-3
- [Approval ETA-10/0406](#)

CFS-IS Intumescent Sealant

REV:

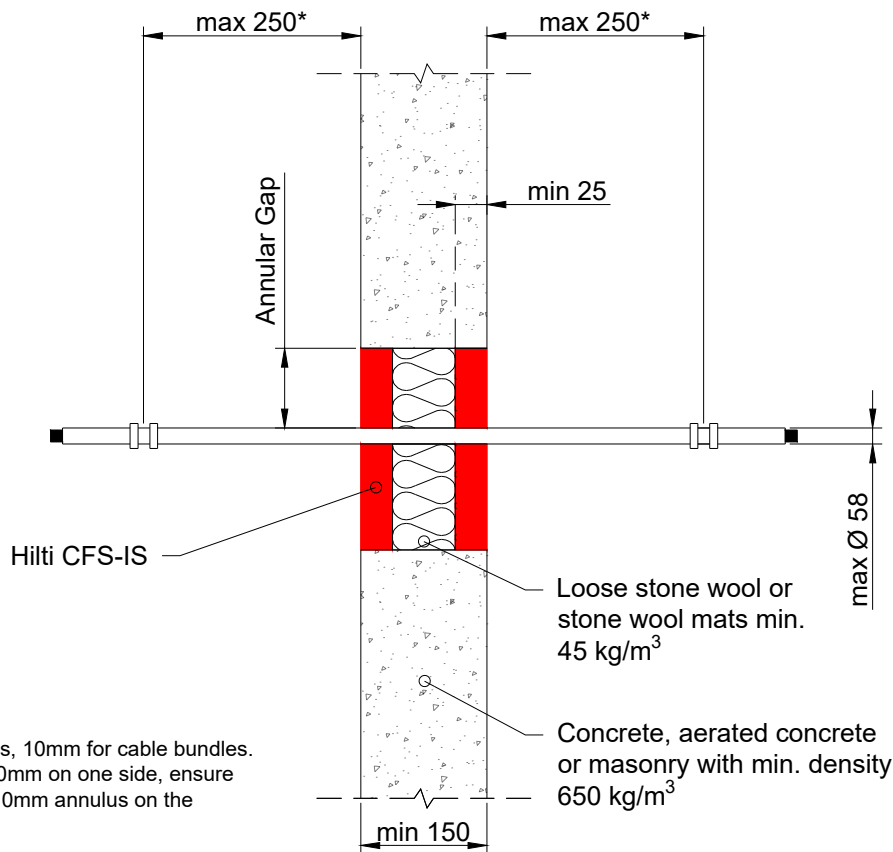
DATE:

01

10/2024

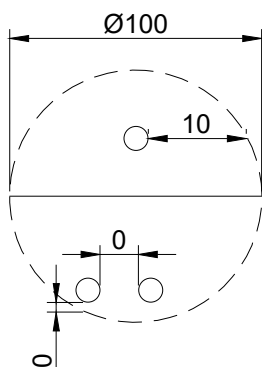
Fire Rating up to EI 120

Page 2/2



Annular gap note:

- 0mm for single cables, 10mm for cable bundles.
- If the annular gap is 0mm on one side, ensure there is a minimum 10mm annulus on the opposite side.



Cable Type/Ø (mm)	Classification
All sheathed cable types currently and commonly used in building practice in Europe (e.g., power, control, signal, telecommunication, data, optical fibre) with a max. Ø 13.8mm	EI 180
Diameter Max Ø58	EI 90
	E 180

Max opening size Ø 100mm.

Min. 100mm distance to other firestopping penetrations and timber studs.

Min. 200mm to other penetrations (e.g., doors, windows etc.)

* First support and ancillary products should be capable of achieving the same fire performance as the seal and supporting structure.

1. The application limits on this detail are for guidance purposes only. For more detailed information based on the full range of available test results please contact the Hilti Technical Advisory Service.
 2. The product and application has been assessed as a minimum to the BS 476 standard. It may have additional European and worldwide testing. Please contact Hilti for further information.
 3. All installations should be carried out in accordance with Hilti's installation instructions and by competent & experienced installers using Hilti branded products.
 4. All services are to be correctly and adequately supported to prevent collapse and distortion.