



APPLICATION:

**Cables within Rigid Walls**

ID:

**IS:SP-RW-E-01**

**INFORMATION:**

- Not to scale
- All units are in millimetres
- Tested according EN 1366-3
- [Approval ETA-10/0406](#)

**CFS-IS Intumescent Sealant**

REV:

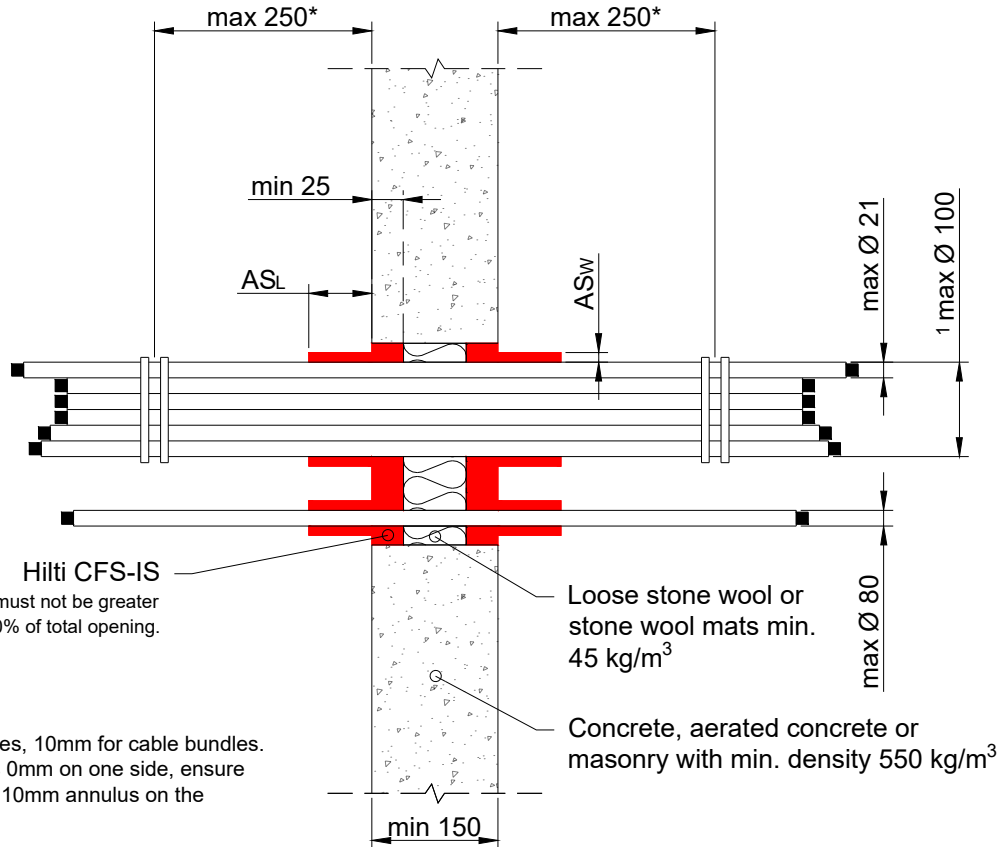
DATE:

**01**

**10/2024**

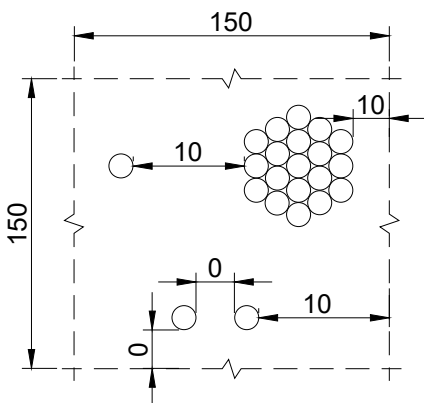
**Fire Rating up to EI 120**

**Page 1/2**



**Annular gap note:**

- 0mm for single cables, 10mm for cable bundles.
- If the annular gap is 0mm on one side, ensure there is a minimum 10mm annulus on the opposite side.



Cable Type / Ø	AS <sub>w</sub>	AS <sub>L</sub>	Classification
Max. Ø21	10	50	EI 120
	10	100	EI 120
21 ≤ Ø 80	10	50	EI 120
	10	100	EI 120
<sup>1</sup> Tied cable bundle of max. Ø100, with max. single cable Ø21	10	50	EI 120
	10	100	EI 120

Max opening size 150mm x 150mm or circular openings of equivalent area (Ø 165 mm).  
 Min. 100mm distance to other firestopping penetrations and timber studs.  
 Min. 200mm to other penetrations (e.g., doors, windows etc.)

All sheathed cable types currently and commonly used in building practice in Europe (e.g., power, control, signal, telecommunication, data, optical fibre).

\* First support and ancillary products should be capable of achieving the same fire performance as the seal and supporting structure.

1. The application limits on this detail are for guidance purposes only. For more detailed information based on the full range of available test results please contact the Hilti Technical Advisory Service.  
 2. The product and application has been assessed as a minimum to the BS 476 standard. It may have additional European and worldwide testing. Please contact Hilti for further information.  
 3. All installations should be carried out in accordance with Hilti's installation instructions and by competent & experienced installers using Hilti branded products.  
 4. All services are to be correctly and adequately supported to prevent collapse and distortion.